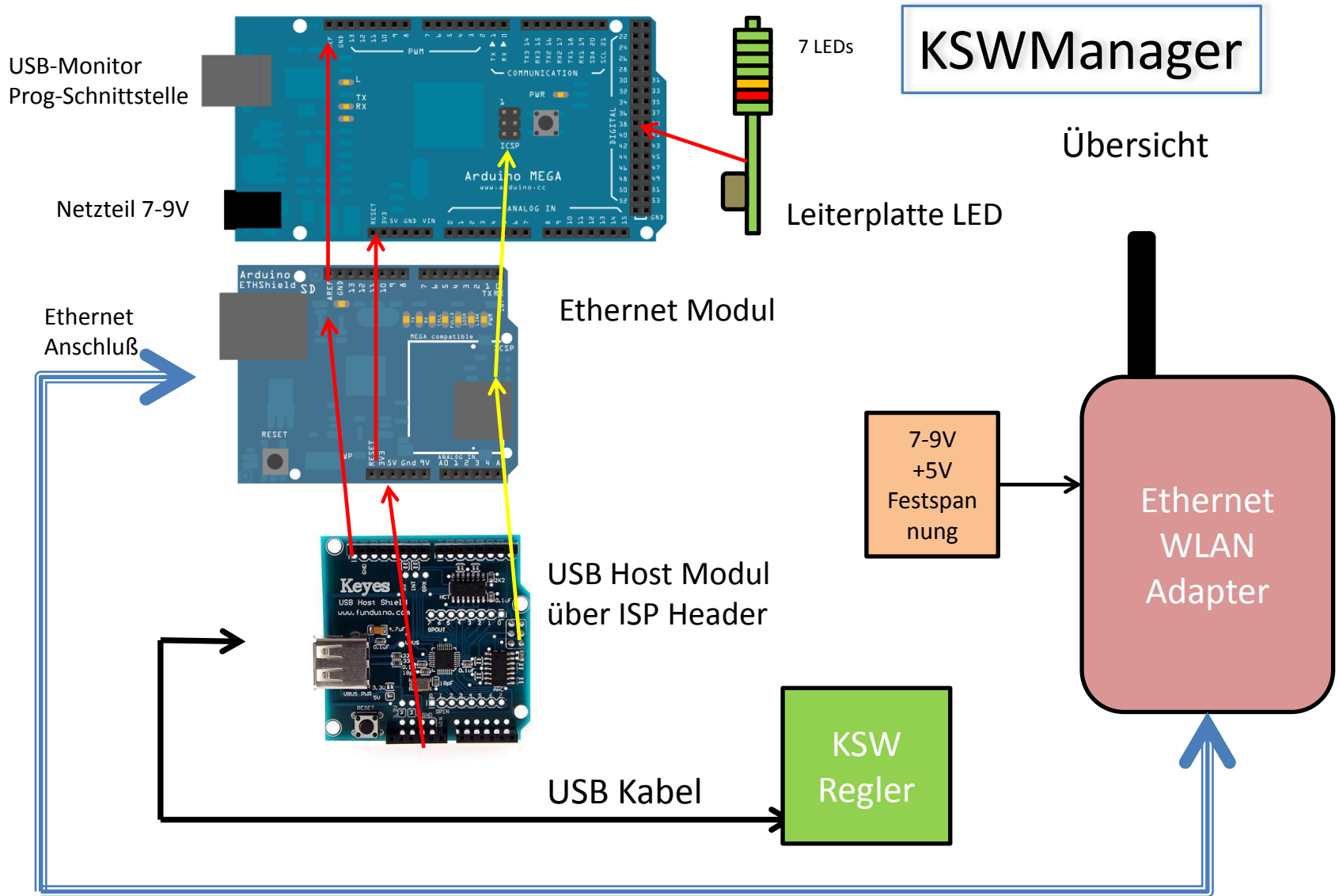


# KSW Manager

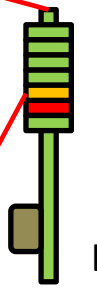
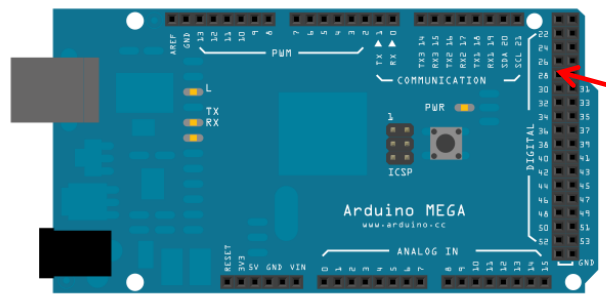
## Übersicht

KSW  
Solar  
Regler

KSW-E, KSW, KS2W  
Solar Thermie Differenzregler (OEG)



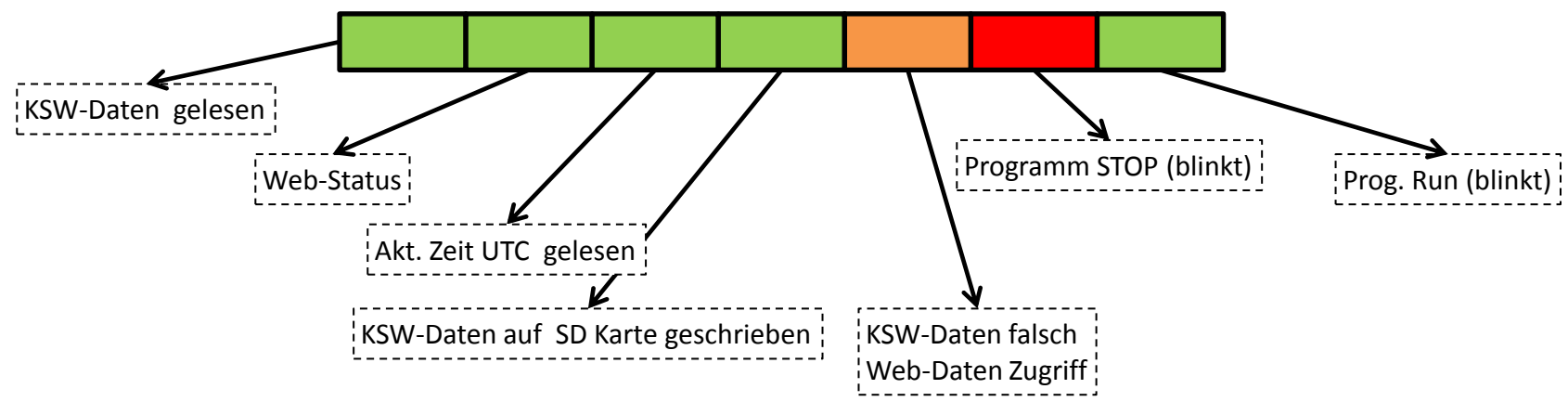
# KSW Manager



7 LEDs

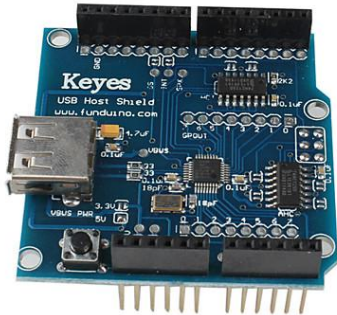
LEDs

Leiterplatte LED  
aufgesteckt auf Pin 22- 52



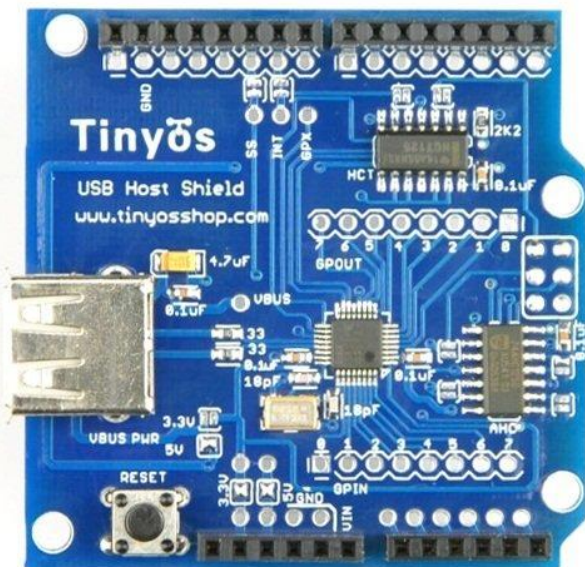
# KSWManager

## USB Host Shield

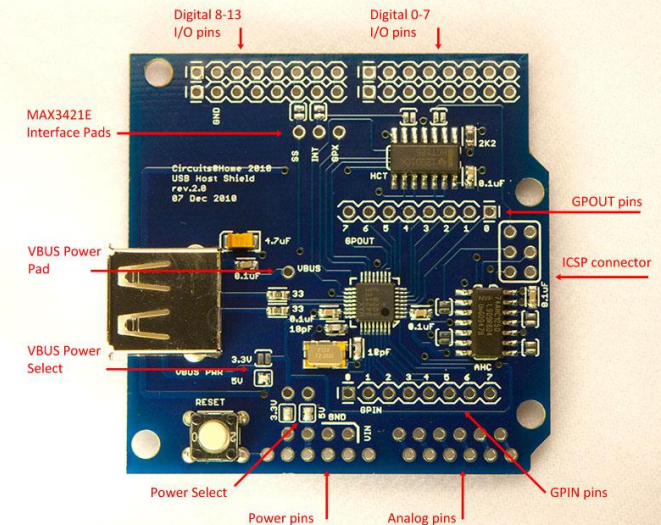


### Spezifikation

- \* Support Android devices : Tablet PC v3.1 and Mobile Phone v2.3.4 and above with Google Open Accessories API (ADK)
- \* Compatible with Mega 2560, Uno 328, Diecimila/Duemilanove 328
- \* Support USB HOST mode, support HUB protocol
- \* USB connector has been moved to the opposite side of the board
- \* MAX3421E RESET line is no longer handled by dedicated SainSmart pin

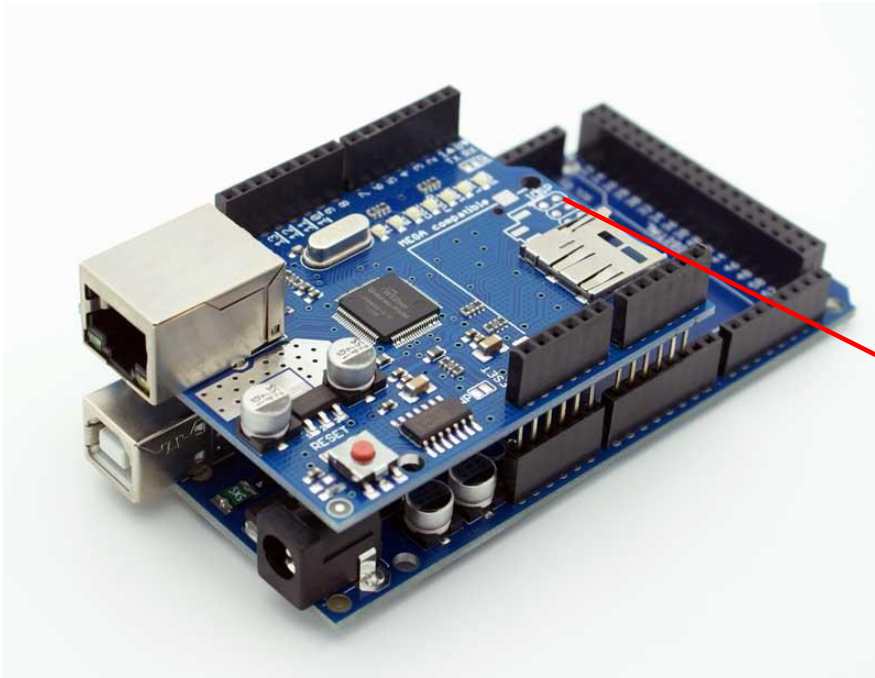


electronics  
**Tinyos**



# KSWManager

USB Host Shield



## ISP Verbindung

2x3 Stift Header auf das Ethernet-Shield auflöten  
dann  
wird auf das USB-Shield  
auf den ISP Header aufgesteckt

